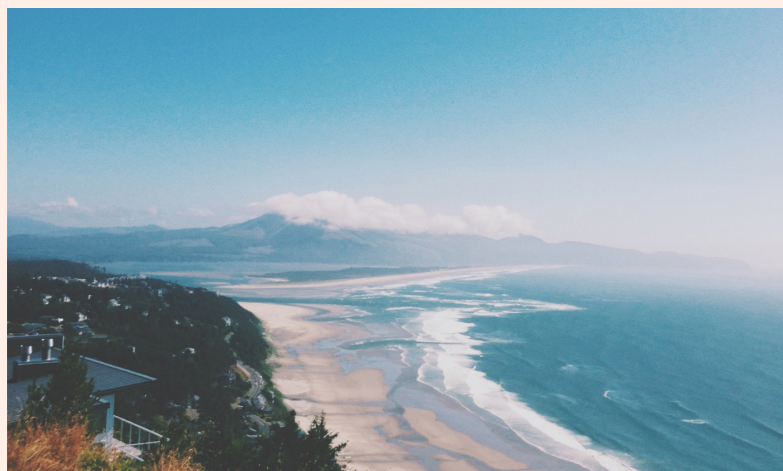





READ & EXPLORE

MINE TELLi





CONTENTS

1. Reasons Why We Should Read More	3
2. Palm Trees	4
3. The Titanic	5
4. Japanese Gardens	7
5. Santa Claus	8
6. Chinese New Year	11
7. Albert Einstein	13
8. Sphinx	15
9. Are They Evil?	17
10. Charles Chaplin	18
11. Useful Applications	20



READ & EXPLORE

hello there!

**Click
and
meet
Emily!**



Click me and watch the video
about reasons why we
should read more.





Palm Trees

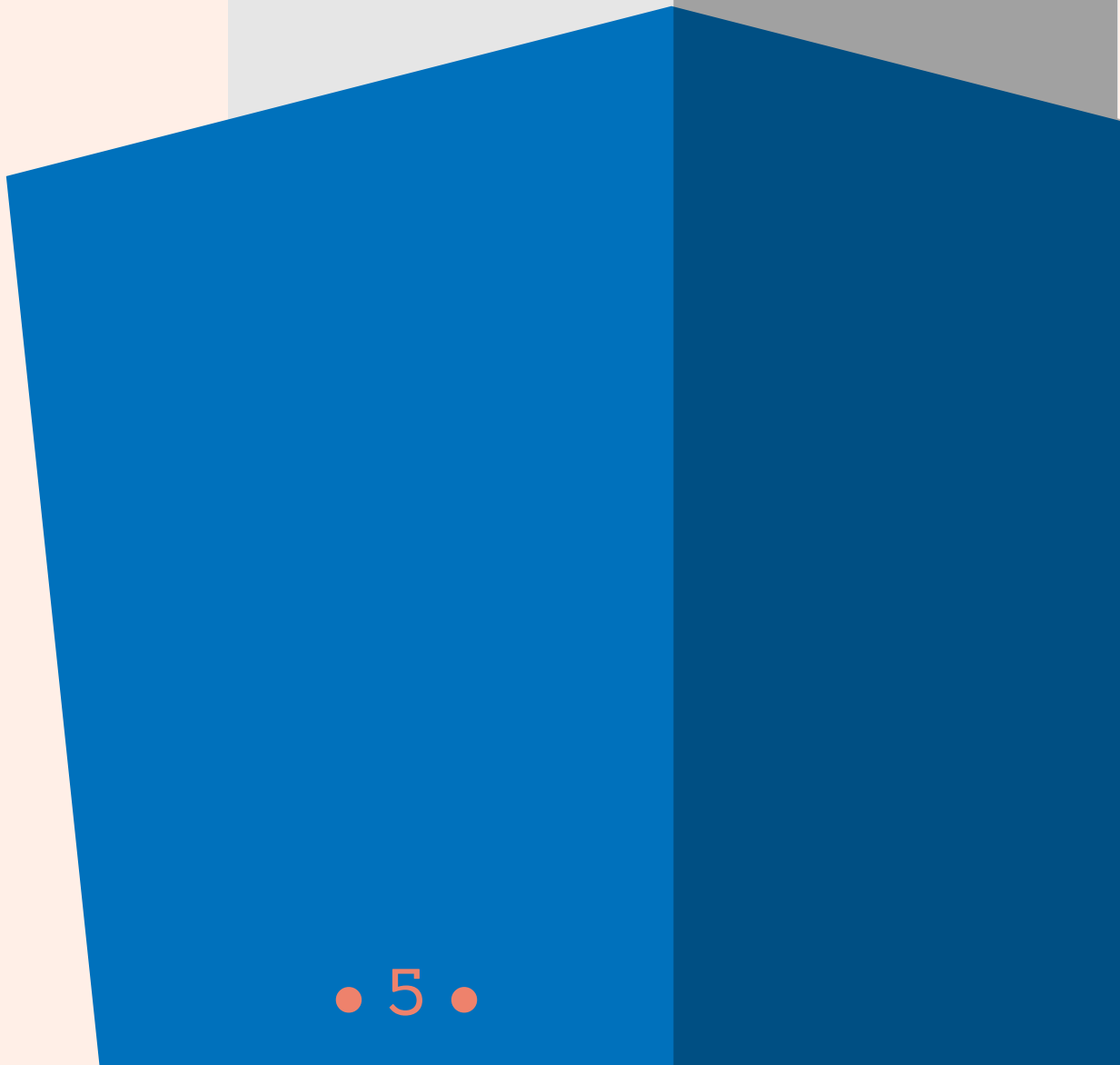


Of the world's 2.500-plus species of palm trees, The Palmyra palm is most important to man, next to the coconut palm, because it yields food and provides over one hundred different useful end-products. To obtain the majority of its benefits, the Palmyra needs to be climbed twice daily to extract the nutritious juice from its flower-bunches. It is this juice, converted by several different methods, that is the basis for wide variety of other products. Collecting this juice, however, is arduous and often dangerous work, for the trees can top 30 metres in height.



Each picture of palm tree has exercises about text. Click them and complete the exercises!

**Hello! I am
Titanic.
Click me and
wacth
a video about me
:)**



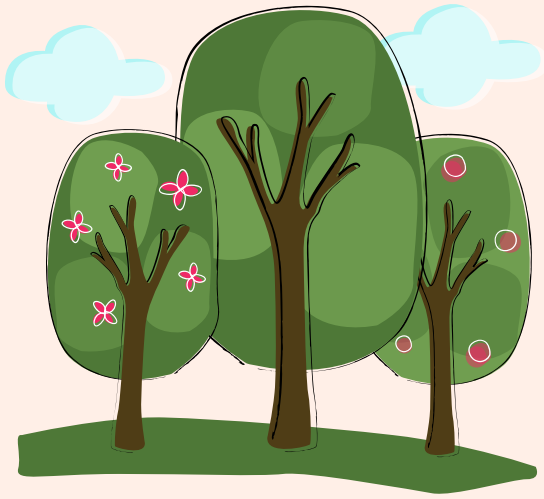
Watch the video and complete the exercise.

Exercise: Choose the correct answer according to the passage.

1. All of the following statements are true except that.....
 - A) more people died at sea in this incident than ever before.
 - B) the huge vessel did not even take as many as three hours to sink.
 - C) Titanic was extremely unlikely to sink.
 - D) the Titanic sank in the northern part of the Atlantic Ocean.
 - E) the Titanic was designed as an extremely comfortable ship.

2. When the lookout noticed the iceberg,
 - A) the ship was travelling at the highest capacity
 - B) he took some time to inform the helmsman of the danger.
 - C) the helmsman were trying to put the ship into reverse gear.
 - D) it was dangerously close to the side of the hull.
 - E) it was already too late to prevent the strike.

3. The author implies that it would probably have been better if
 - A) Titanic had not been insured.
 - B) the ship had been almost completely flooded
 - C) the Titanic had not been so large and luxurious
 - D) the iceberg had not been seen before the accident.
 - E) the ship had not taken more than three hours to sink.



Words:

Pavilion, crane, chrysanthemum

(Click the trees and read the passage)

Exercise: Choose the correct answer according to the passage.

1. The main characteristic of the Japanese garden is that

- A) it is a small version of nature, reflecting the designer's views.
- B) it is designed beside natural rivers, streams, or ponds.
- C) it is regarded as a sacred place and treated accordingly
- D) it always contains exactly the same elements.
- E) it is usually smaller than a European garden.

2. Most of the things in a Japanese garden

- A) are casually positioned, out of the effort to make them seem natural.
- B) are made up of certain kinds of flowers.
- C) are natural rather than artificial.
- D) symbolize something according to Japanese beliefs.
- E) are arrangements of flowers made in a formal way.

3. It's stated in the passage that

- A) keeping turtles in Japanese garden ponds is very popular.
- B) in most Japanese gardens, you can see cranes, birds representing good luck.
- C) there is usually a tea pavilion in the gardens of the Japanese poets.
- D) the golden chrysanthemum is a flower which can be used only by the Imperial family.
- E) Japanese gardens even contain artificial streams, ponds, and islands.

**You can read the
passage
on the next page or
watch
the video about me.
Click my picture to
watch!**



WORDS

- Province
- Bishop
- Persecution
- Successor
- Devotion
- Sleigh

Santa Claus

The legend of jolly old Santa Claus, or St. Nick, began with a real person: St. Nicholas, who lived many centuries ago. Although he is one of the most popular saints honored by Christians, very little is actually known about him. He lived during the 4th century in Lycia, a province on the southwest coast of Asia Minor. Tradition says he was born in Patara, a seaport, and travelled to Egypt and Palestine as a young man. Eventually he became bishop of the church at Myra. During the period of the persecution of Christians by Emperor Diocletian, he was imprisoned but was released by Diocletian's successor, Constantine the Great. By the 6th century his burial shrine was well known at Myra. In 1087 his remains were moved to Bari, Italy, which became a crowded pilgrimage center. Devotion to him spread throughout the Christian world, and thousands of churches throughout Europe were named after him. His feast day was set on December 6.

The transformation of St. Nicholas into Santa Claus began in Germany, where he was called Kris Kringle, derived from Christkindle, meaning Christ child and he became permanently associated with the Christmas season and gift-giving. From there his legend spread to France, where he was called Pere Noel. In the Dutch colony of New Amsterdam –now New York City- he was called Sinter Claes, which easily became Santa Claus.

As Christmas became more widely celebrated, the legend grew. In 1823, Clement C. Moore wrote "A Visit from St. Nicholas" portraying Santa Claus riding in a sleigh drawn by "eight tiny reindeer", the same mode of travel he uses in Scandinavia. The first drawing of him that resembles today's Santa Claus was a cartoon by Thomas Nast that appeared in Harper's Weekly in 1866.

After watching video or reading passage, complete the exercise

Exercise: Are the following statements true or false?

1. Although Santa Claus is normally drawn with the snow of Northern Europe around him, it is clear from the passage that St. Nicholas came from a coastal region in Asia Minor.

true

false

2. The passage describe how St. Nicholas was imprisoned by Constantine the great.

true

false

3. According to the passage, the name Santa Claus is derived from the Dutch immigrant name for St. Nicholas.

true

false

4. The name Santa Claus started to be used in Italy during the 11th century.

true

false

5. The first drawing of Santa Claus was different from today cartoons.

true

false



Chinese New Year

The most important holiday in China is the Lunar New Year. Since it is based on the lunar calendar, it comes about a month later than the Western New Year. The Chinese New Year season traditionally lasts about a month; however, so that working life will not be interrupted for too long, the period has now been reduced to a week or less.

There are some parallels with the Western New Year: houses are cleaned and families get together for the festivities. All debts must be paid off so that the new year can start with a fresh beginning. Feasts are enjoyed with family and friends, and there are lively dragon and lion dances in the streets. Everywhere there is the sound of firecracker explosions. Children receive gifts or little red envelopes with money inside them.

Many superstitions are related to the celebration of Chinese New Year. No sweeping should be done in case the family's good fortune is swept out of the door with the trash. One should be especially careful not to break any dishes, for such an accident is believed to bring about serious problems between members of the family throughout the coming year.

**Watch and learn
more
information about
tradition
of Chinese New Year.**



Exercise: Choose the correct answer according to the passage.

1. The aim in shortening the Chinese New Year season was

- A) to bring it closer to the Western New Year traditions.
- B) to lower the cost of celebration.
- C) to reduce the number of feasts held.
- D) to prevent the streets from becoming too congested with dragon and lion dances.
- E) to minimize disruption of work.

2. The Chinese and Western New Year

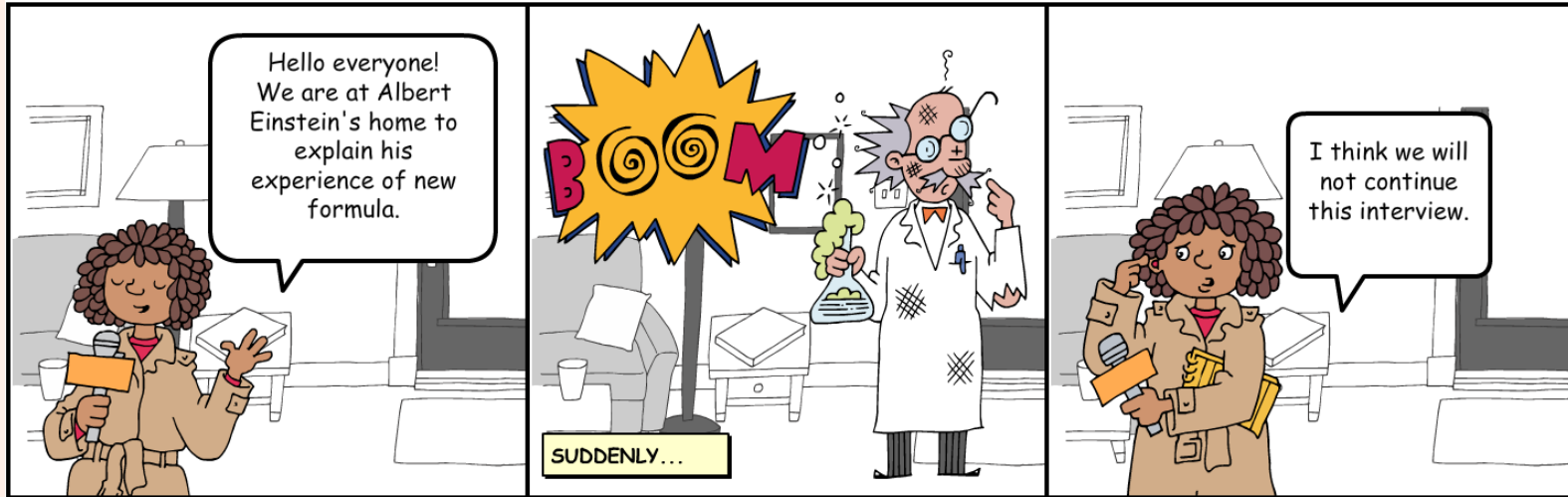
- A) share certain similarities
- B) are both celebrated in January
- C) have absolutely nothing in common
- D) both last for about a month
- E) are both based on the lunar calendar

3. At Chinese New Year

- A) children are the most important people
- B) debts are traditionally cancelled
- C) the Chinese observe a lot of superstitions
- D) nobody eats from dishes
- E) disagreements in the family are settled

4. Because of, the period of Chinese New Year has been reduced to a week or less.

- A) policy issues
- B) noisy feast
- C) working life
- D) corrupted tradition
- E) Chinese belief



Albert Einstein

Albert Einstein was born in Ulm, Germany on March 14, 1879. At the age of only 10/11, Einstein revealed an extraordinary curiosity for understanding the mysteries of science. Einstein also liked to play both the violin and piano. Moving first to Italy and then to Switzerland, the young prodigy graduated from high-school in 1896.

In 1905, while working as a patent clerk in Bern, Switzerland, Einstein had what came to be known as his "Annus Mirabilis" or "miracle year". It was during this time that the young physicist obtained his Doctorate degree and published four of his most influential research papers, including the Special Theory of Relativity. Einstein is generally considered the most influential physicist of the 20th century, best known for his mass–energy equivalence formula $E = mc^2$.

In 1916, Einstein completed his General Theory of Relativity. In 1921 he was awarded the Nobel Prize in Physics for his services to theoretical physics, and especially for his discovery of the law of the photoelectric effect. Einstein is often regarded as the father of modern physics. Einstein published more than 300 scientific papers along with over 150 non-scientific works.

After reading passage, complete the exercise

**Exercise: Are the following statements true or false?
Write true statement if it is false.**

1. Einstein's curiosity of science started at the year of his teenager

true

false

2. While he had his miracle year, he was around the age of 26.

true

false

3. Einstein had lot of papers and work but he is best know for formula $E = mc^2$ of mass-energy equivalence.

true

false

4. His General Theory of Relativity was never completed.

true

false

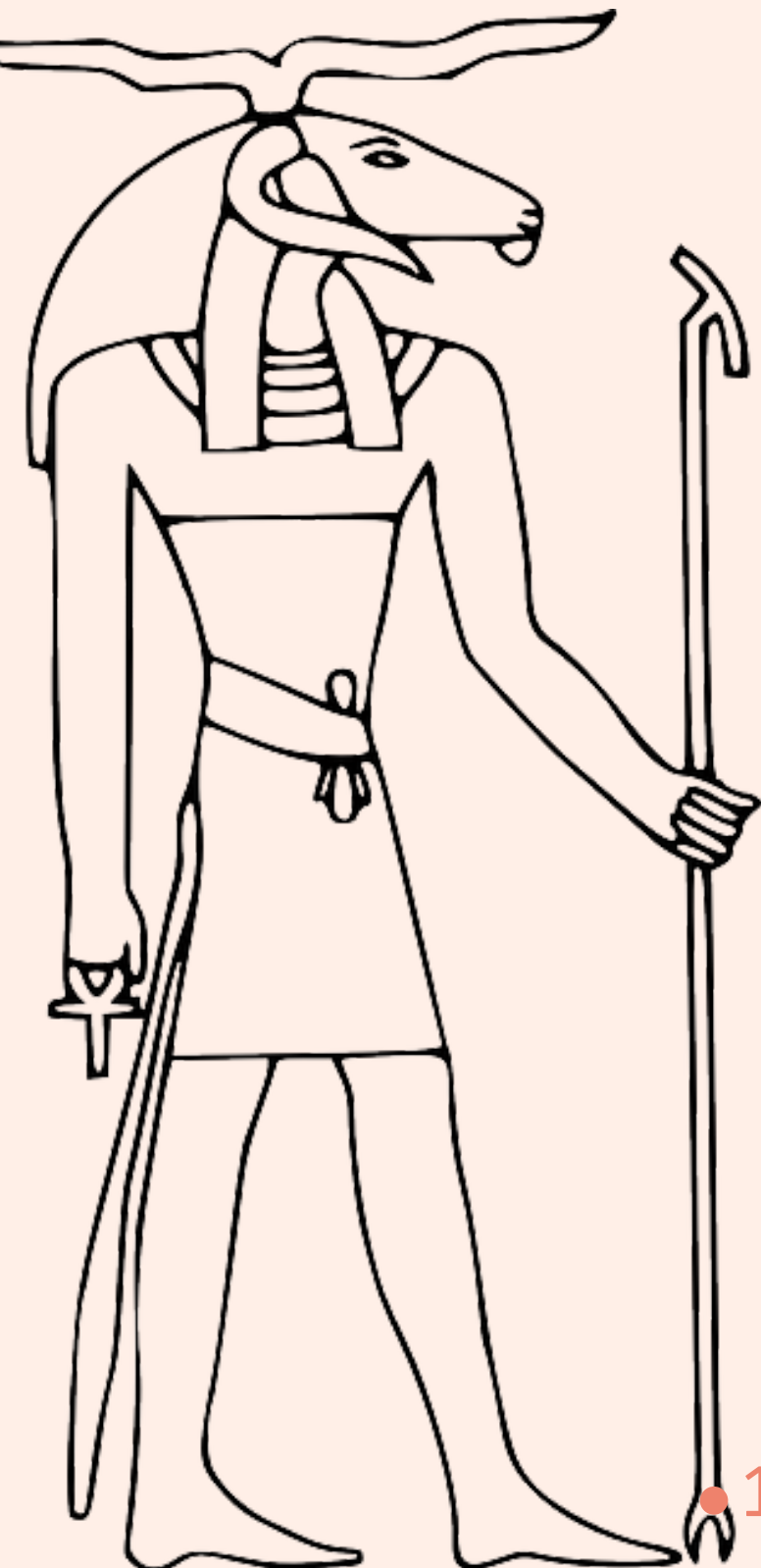
5. He was awarded the Nobel Prize in Physics for all his work but for his discovery of the law of the photoelectric effect.

true

false



SPHINX



Click here
and see
information map
something about
my culture.

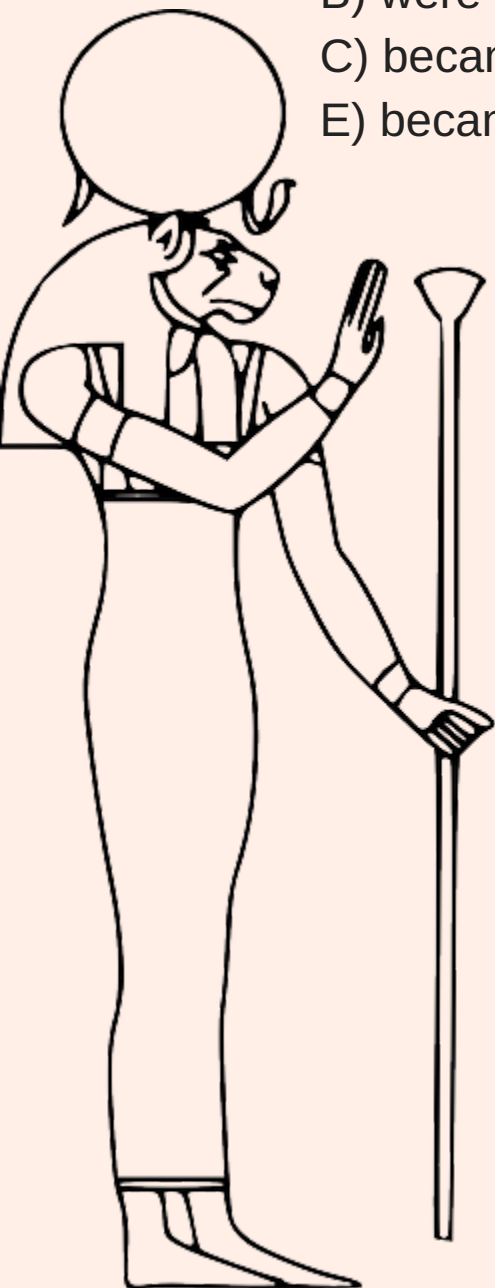
Exercise: Choose the correct answer according to the map.

1. According to the map, Egyptian sphinxes

- A) normally depicted the people's ruler
- B) had the wings of an eagle
- C) were more like a bust than a complete figure
- D) were usually of the size of a lion
- E) were found inside the tomb of a ruler

2. It is understood from the map that sphinxes ...

- A) were only common in Egypt
- B) were always carved to resemble Khafre
- C) became popular with several civilizations
- E) became less intricate with time



3. It is clear from the map that the Great Sphinx at Giza

- A) can be found near the tomb of the pharaoh depicted on its head
- B) is not a monster at all but a beautiful intelligent female
- C) was carved by the sky god Horus
- D) is the largest of all sphinxes in the world
- E) appears in later Greek literature



Are They Evil?

(Click the picture and read the passage)

Exercise: Choose the correct answer according to the passage.

1. During the Middle Ages, cat owners were in danger of being ...

- A) thought to be evil people
- B) forced to kill their pets
- C) perceived as very superstitious
- D) considered to be the devil himself
- E) used in the construction of buildings

2. It's obvious from the passage that the widespread epidemics in Europe in the Middle Ages

- A) were believed to be the result of bad luck
- B) helped to control the amount of rodents
- C) caused the cat population to decline dramatically
- D) were believed to be the work of witches
- E) were connected to the diminishing numbers of cats

3. It's clear from the passage that during the 17th century, ...

- A) people no longer had any superstitions
- B) cats were no longer considered to be rodents
- C) the persecution of cats rose to its height
- D) disease had wiped out most of Europe's cats
- E) the cats' luck began to change for the better

Charles Chaplin

In 1911 a penniless young music-hall artist left England for America. His future was uncertain but he did not believe it could be unhappier than his past. He has grown up in the slums of London's East End and had experienced great poverty. His mother's life had been so hard that she had finally gone mad, and his father had died of drink. Both parents had been on the stage and lived in the hope that they would one day be stars. Their son was determined to succeed where they had failed. By 1914 his optimism and determination had been justified. Charles Chaplin was the most talked-about man in America, the king of silent movie. He was not only admired as a first-class actor and comedian, he was also making his name as a director. How did he reach the top of the film world in such a short time? He was not an instant success. His attempts to copy other slapstick comedians who were popular at that time were a failure. However he gradually began to develop the character of the tramp that will always be connected to his name. He borrowed ideas from many sources and though he "stole" most of his clothes from other slapstick comedians of the time, he developed his own special mannerisms to go with them. He used his bowler hat to signal secret messages and his walking stick allowed him to cause confusion and punish his enemy from a distance. He got the idea for his famous flat-footed walk from a London taxi driver who had sore feet.



★ **Factory scene from his
first talking film "Modern
Times"** ★



Exercise: Choose the correct answer according to the passage.

1. Charles Chaplin began to gain in popularity as a comedian

- A) as soon as he arrived in America
- B) only when he created his own individual style, based on many borrowed ideas
- C) when he copied other comedians already famous at that time
- D) after he had directed a few silent movies
- E) only after he began to use a bowler hat and a walking stick

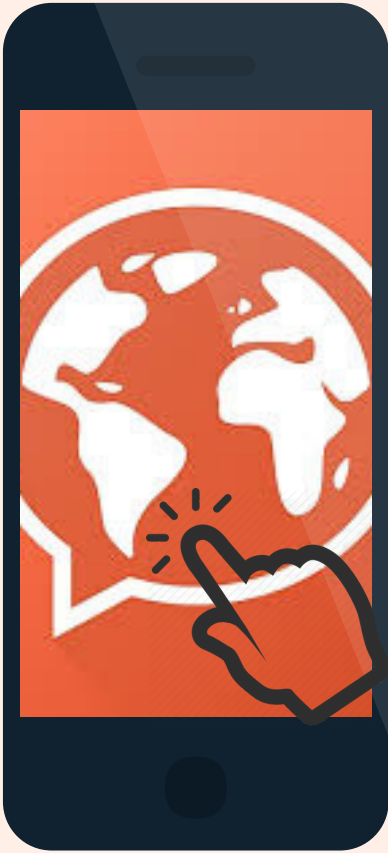
2. It is stated in the passage that

- A) Chaplin showed great talent as a music-hall artist in his childhood
- B) Chaplin's parents were both stars on the stage
- C) Chaplin's parents hoped that their son would also become a star one day
- D) directing films contributed greatly to Chaplin's becoming famous as a comedian
- E) Chaplin was a director as well as being a very popular actor

3. We can infer from the passage that the accessories Chaplin used

- A) originated from the appearance of a taxi driver in London
- B) had to be stolen from other comedians because of his lack of money
- C) were each given certain functions in his performances
- D) were borrowed from several places which helped actors at that time
- E) made him the king of silent movies of his time

Applications for you to use



1. Mondly is teaching 33 languages from Europe, North and South America, Asia and Africa.
2. This application provides fun and adaptive lessons that encourage users to practice the language.
3. Its professional voice actor helps users to adapt different pronunciation.
4. Memory recall with fun activities.



1. Peak makes brain training fun and rewarding.
2. The app chosen by Google as one of the Best Android Apps in 2016.
3. There are games that challenge your Memory, Attention, Problem Solving, Mental Agility, Language, Coordination, Creativity and Emotion Control.
4. This application is the personal trainer for your brain.
5. There are more than 35 games available and regular updates to keep you challenged.